

# "Artisan"



New!

## dinner plate "Artisan"

stainless steel 18/10, round, inside polished, outside matt finish, hammered rim with golden adornment (brass), utility space smooth finish

item	Ø in cm
2375.33	33



New!

## bread/pastry dish "Artisan"

stainless steel 18/10, oval, flat, inside polished, outside matt finish, hammered rim with golden adornment (brass), bottom smooth finish

item	l x w x h in cm
2372	22x15x3.5



New!

## bread/pastry dish "Artisan"

stainless steel 18/10, oval, high, inside polished, outside matt finish, hammered rim with golden adornment (brass), bottom smooth finish

item	l x w x h in cm
2373	22x13x7



New!

## bowl "Artisan"

stainless steel 18/10, round, inside polished, outside matt finish, hammered rim with golden adornment (brass)

item	Ø in cm	height in cm	content in L
2371.07	7.5	3.5	approx. 0.1
2371.11	11	5.5	approx. 0.3
2371.14	14.5	7	approx. 0.7



**Please note:** When cleaning in the dishwasher the brass rim may change colour in the course of time. Therefore it is recommended to clean these items by hand.





**New!**

## tray "Artisan"

stainless steel 18/10, oval, inside polished, outside matt finish, hammered rim with golden adornment (brass), utility space smooth finish

item	l x w in cm	height in cm
2374.24	24.5x15	approx. 1.5



**New!**

## tray "Artisan"

stainless steel 18/10, round, inside polished, outside matt finish, hammered rim with golden adornment (brass), utility space smooth finish

item	Ø in cm	height in cm
2370.23	23	approx. 2.5
2370.28	28	approx. 3
2370.33	33	approx. 3
2370.39	39	approx. 3.5

The trays and bowls of the "Artisan" series are fascinating and diversified at the same time. The inside with its perfectly polished surface creates an interesting contrast to the matt outside.

The handcrafted rim impresses by its irregularity and is crowned by a circumferential brass edge. The combination of hammered and plain surfaces, of massive stainless steel and brass, awards this series with that certain something.

"Artisan" is a series of contrast!



The plane surface of the trays facilitates the service and prevents unpleasant noise. When used at the buffet, creatively arranged food can be presented in an appealing way and is accentuated by the reflection of the polished surfaces.

**New!**

## etagere "Artisan"

stainless steel 18/10, round, inside polished, outside matt finish, hammered rim with golden adornment (brass), with brass handle, demountable, with 3 rubber feet

item	Ø in cm	height in cm
2376	33/28/23	45

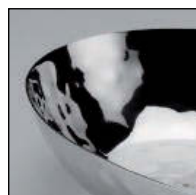


The buffet displays "Neo" are available on page 33.

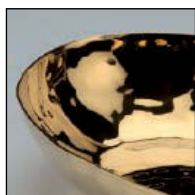
# Stainless steel - refined!

We gladly offer you buffet stands, bread baskets or cruet stands etc. with different surfaces. This option is feasible for almost all products made of stainless steel.

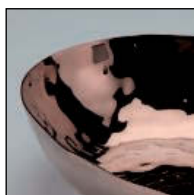
Highly polished as well as matt stainless steel can be refined in gold, copper or black colour in PVD refining. The products pictured on this page are parts of the Zieher range. Other items and refinements in black can be offered on demand.



stainless steel , polished



golden



copper



black

All items made of stainless steel can be powder-coated in all current RAL colours upon request. In contrast to the PVD refining this coating is not dishwasher-safe. We will be delighted to advise you!



Price, minimum order quantity and delivery time upon request. Please ask us, we will gladly prepare an individual offer for you!

## Advantages of the PVD coating

- Food-safe
- Dishwasher-safe
- Better strength and adherence compared to galvanic refinement
- Brilliant colouring, colourfast and resistant against UV radiation



### bowl

massive stainless steel 18/10, oblong, hammered finish, six times polished, 41 cm long, 15.5 cm wide, 6.5 cm high

item	version
2116.41	stainless steel
2116.41G	stainless steel, golden
2116.41C	stainless steel, copper



### bowl "Wings"

massive stainless steel 18/10, hammered finish, six times polished, 34 cm long, 22 cm wide, 48 cm high

item	version
2169	stainless steel
2169.G	stainless steel, golden
2169.C	stainless steel, copper



### bowl

massive stainless steel 18/10, oblong, hammered finish, six times polished, 71.5 cm long, 22.5 cm wide, 11 cm high

item	version
2116.71	stainless steel
2116.71G	stainless steel, golden
2116.71C	stainless steel, copper



### champagne bowl

massive stainless steel 18/10, hammered finish, six times polished, Ø 39 cm, 18 cm high, 18 L content

item	version
2163	stainless steel
2163.G	stainless steel, golden
2163.C	stainless steel, copper



### chocolate/ice cube tongs

massive stainless steel 18/10, hammered finish, six times polished, 19 cm long

item	version
2138	stainless steel
2138.G	stainless steel, golden
2138.C	stainless steel, copper



### serving tongs

massive stainless steel 18/10, hammered finish, six times polished, 21.5 cm long

item	version
2140	stainless steel
2140.G	stainless steel, golden
2140.C	stainless steel, copper



### dish "Sixth Sense"

massive stainless steel 18/10, with stainless steel feet, hammered finish, six times polished, 15.5 cm long, 8 cm wide, 24.5 cm high

item	version
2171.03	stainless steel
2171.03G	stainless steel, golden
2171.03C	stainless steel, copper



## "Art de Buffet"

The exceptional design of the "Art de Buffet" series acts as an eye-catcher at both modern and elegantly traditional buffets. It presents artistically arranged dishes in a favourable way. Every piece of this series is made of massive stainless steel 18/10, has a hand-made hammered finish and is six times hand-polished.



The XXL bowl item 2170 is available on page 91.



item 2171

The stainless steel bowls are available on page 86.



item 2171



**dish "Sixth Sense"**

massive stainless steel 18/10, with stainless steel feet, hammered finish, six times polished

item	l x w x h in cm
2171	48x25x74
2171.01	37x17.5x54
2171.02	20x12x34



**dish "Sixth Sense"**

massive stainless steel 18/10, with stainless steel feet, hammered finish, six times polished, 15.5 cm long, 8 cm wide, 24.5 cm high

item	version
2171.03	stainless steel
2171.03G	stainless steel, golden <b>New!</b>
2171.03C	stainless steel, copper <b>New!</b>



**dish/tray**

massive stainless steel 18/10, oblong curved, hammered finish, six times polished

item	l x w x h in cm
2112	30.5x7.5x6



## "Art de Buffet"



**Please note:** The baseplate has to be mounted!

**New!**

### bowl "Loop"

massive stainless steel 18/10, oval, hammered finish, six times polished, with black marble foot

item	l x w x h in cm
2109	39x19x67



The bread/pastry bowls are available on page 92.



### bowl "Wings"

massive stainless steel 18/10, hammered finish, six times polished, 34 cm long, 22 cm wide, 48 cm high

item	version
2169	stainless steel
2169.G	stainless steel, golden <b>New!</b>
2169.C	stainless steel, copper <b>New!</b>

**New!**

### bowl "Wings"

massive stainless steel 18/10, hammered finish, six times polished

item	l x w x h in cm
2169.01	21x12.5x30.5
2169.02	15.5x9x19





#### etagere

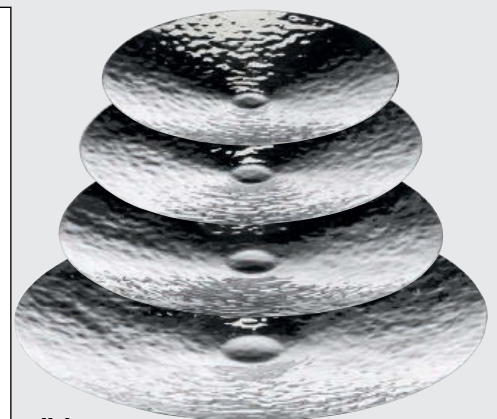
massive stainless steel 18/10, round, with stainless steel feet (spherical shape), hammered finish, six times polished, not demountable

item	Ø in cm	height in cm
2197	50/40/30	33



Feet ensure safe standing!

The servers "Mao" are available on page 290,  
the bread bowls "Solid" on page 111.



#### dish

massive stainless steel 18/10, with 4 feet, hammered finish, six times polished

item	Ø in cm	height in cm
2199.30	30	3.5
2199.35	35	4
2199.40	40	4.5
2199.50	50	5



#### dressing jar

massive stainless steel 18/10, double-walled, polished inside, hammered finish outside, six times polished

item	Ø in cm	height in cm	content in L
2176	14	15.5	1.5





**New!**

## buffet stand

massive stainless steel 18/10, round, made of polished round bars

item	Ø in cm	height in cm
2108.14	14	13
2108.19	19	17
2108.25	25.5	19

More buffet stands are available on page 90.



## etagere

massive stainless steel 18/10, round, hammered finish, six times polished, not demountable

item	Ø in cm	height in cm
2198	27/22/18/14	50





# "Art de Buffet"

DESIGN  
by  
ZIEHER



HAMMERED



### etagere

massive stainless steel 18/10, triangular, hammered finish, six times polished, not demountable

item	Ø in cm	height in cm
2180	40	51



### bowl

massive stainless steel 18/10, triangular, hammered finish, six times polished

item	Ø in cm	height in cm	content in L
2180.09	9	4	0.08
2180.13	13	6	0.28
2180.22	22	10.5	1.25
2180.30	30	12	3.0
2180.40	40	16	7.0



### bowl

massive stainless steel 18/10, oval, hammered finish, six times polished

item	l x w x h in cm
2183	40x23x9/18.5

The servers "Mao" are available on page 290, the rings made of silicone on page 161.



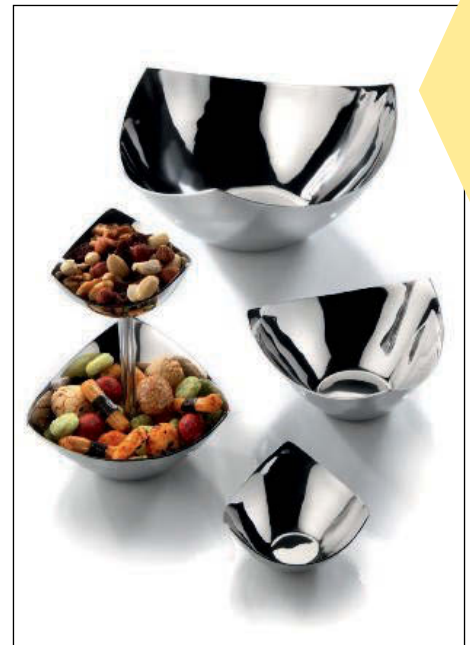
## SMOOTH



### etagere

massive stainless steel 18/10, triangular, smooth finish, six times polished, not demountable

item	Ø in cm	height in cm
2187	13	16.5



### bowl

massive stainless steel 18/10, triangular, smooth finish, six times polished

item	Ø in cm	height in cm	content in L
2182.09	9	4	0.08
2182.13	13	6	0.28
2182.22	22	10.5	1.25
2182.30	30	12	3.0



### bowl

massive stainless steel 18/10, oval, smooth finish, six times polished

item	l x w x h in cm	content in L
2159.16	16x10x3.5/7	approx. 0.2
2159.20	20x12x5/9	approx. 0.35







The glass bowls are available on page 78.



item 5329.25 (page 180) + 2141.01



### buffet stand

massive stainless steel 18/10, highly polished

item	Ø in cm	height in cm
2141.01	25/20	13
2141.02	27 / 22	17.5
2141.03	29/25	23



### bowl

massive stainless steel 18/10, oblique, hammered finish, six times polished

item	Ø in cm	height in cm
2174	38	7 / 15



### caviar set "Klaro"

glass, transparent, square, dimensions:  
big bowl 14x14x8.5 cm, 0.67 L content,  
small bowl 8x8x4.5 cm, 0.1 L content

item	l x w x h in cm	packing unit
5347	14x14x10	three-parts



### fruit/bread basket

massive stainless steel 18/10, square, highly polished, with base plate, stand for caviar set "Klaro" item 5347

item	l x w x h in cm
2168.15	15x15x15



item 8005.21 (page 63) + 2141.03

item 2174 + 2141.01

item 2161 (page 92) + 2141.01



rechargeable LED-light: page 39



For the XXL bowl with 85 L total content we suggest to use 2 - 3 LED-lights item 8150 (page 39) for illumination.



**XXL bowl! 85 L content!**



### bowl/basin XXL

massive stainless steel 18/10, round, hammered finish, six times polished

item	Ø in cm	height in cm	content in L
2170	70	30	85

Separates ice and melt water  
item 2170 + 8150 + 5240.M



### buffet tray/separating plate "Milky"

hardened glass (10 mm thick), frosted look, reduces useable capacity of XXL bowl to approx. 40 L content (15 cm usable depth)

item	Ø in cm
5240.M	60



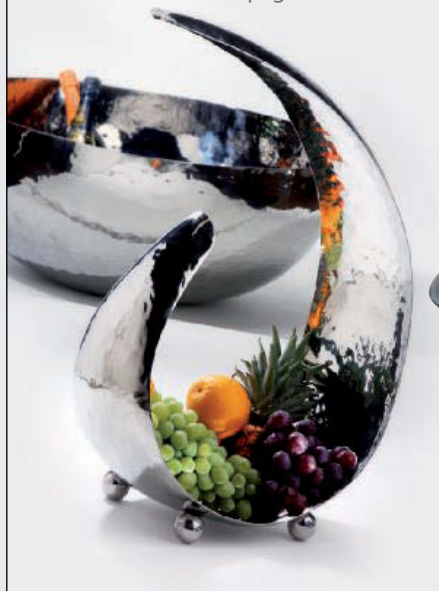
### buffet bowl

massive stainless steel 18/10, hammered finish, six times polished

item	Ø in cm	height in cm
2122	47	9



The bowl "Sixth Sense" is available  
in 4 sizes on page 84.



item 2163 +  
5024.45 (page 78)



The XXL bowl "Konkret!" is  
available on page 49.



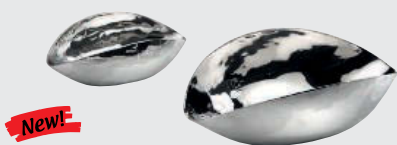
### champagne bowl

massive stainless steel 18/10, hammered finish, six times polished, Ø 39 cm, 18 cm high, 18 L content

item	version
2163	stainless steel
2163.G	stainless steel, golden <b>New!</b>
2163.C	stainless steel, copper <b>New!</b>



The bowl "Loop" is available on page 85.



**New!**

#### bread/pastry dish

massive stainless steel 18/10, hammered finish, six times polished

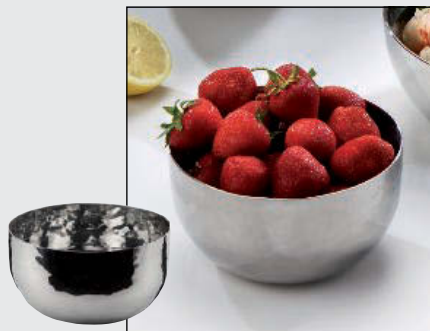
item	l x w x h in cm
2133.12	12x7.5x4.5
2133.19	19x11.5x6.5



#### bread/pastry dish

massive stainless steel 18/10, hammered finish, six times polished

item	l x w x h in cm
2121.22	24x15x8



#### bowl

massive stainless steel 18/10, round, high, hammered finish, six times polished

item	Ø in cm	height in cm	content in L
2181.14	14	7.5	1.0



#### bowl

massive stainless steel 18/10, round, hammered finish, six times polished

item	Ø in cm	height in cm	content in L
2181.17	17	6.5	1.1
2181.21	21	8.0	2.0
2181.24	24	9.5	3.25



#### small bowl

massive stainless steel 18/10, oval, hammered finish, six times polished, 9 cm long, 6 cm wide, 0.10 L content

item	version
2149.07	without spiral clip
2155.01	with spiral clip



#### small bowl

massive stainless steel 18/10, round, hammered finish, six times polished, Ø 7.5 cm, 0.11 L content

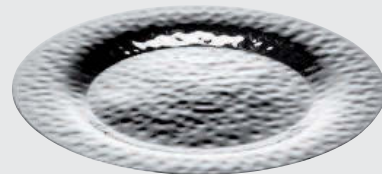
item	Ø in cm
2153	without spiral clip
2155	with spiral clip



#### small bowl

massive stainless steel 18/10, round, smooth finish, six times polished

item	Ø in cm	content in L
2153.01	7.5	0.11



#### dinner plate

massive stainless steel 18/10, round, hammered finish, six times polished

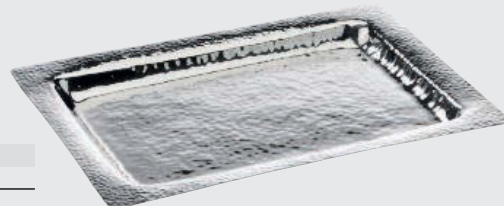
item	Ø in cm
2161	33



#### plate, deep

massive stainless steel 18/10, deep, with wide rim, hammered finish, six times polished

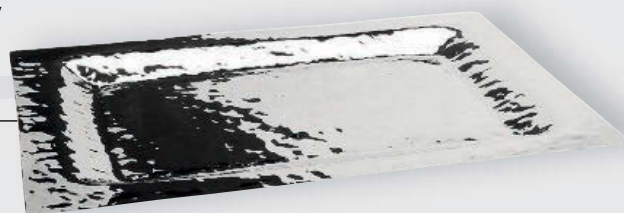
item	Ø in cm	height in cm	content in L
2118	26.5	6	0.5



#### tray

massive stainless steel 18/10, rectangular, hammered finish, six times polished

item	l x w in cm
2186	38x28



#### tray

massive stainless steel 18/10, rectangular, hammered finish, six times polished

item	l x w in cm
2127	57x42





### bowl

massive stainless steel 18/10, oblong, hammered finish, six times polished, 41 cm long, 15.5 cm wide, 6.5 cm high

item	version
2116.41	stainless steel
2116.41G	stainless steel, golden <del>New!</del>
2116.41C	stainless steel, copper <del>New!</del>



### bowl

massive stainless steel 18/10, oblong, hammered finish, six times polished, 71.5 cm long, 22.5 cm wide, 11 cm high

item	version
2116.71	stainless steel
2116.71G	stainless steel, golden <del>New!</del>
2116.71C	stainless steel, copper <del>New!</del>



### buffet tray

massive stainless steel 18/10, with foot, hammered finish, six times polished

item	l x w x h in cm
2128	55x42x17



### bowl

massive stainless steel 18/10, oval, hammered finish, six times polished

item	l x w x h in cm
2117	40.5x25x8.5

The five-stage etagere item 2119 is available on page 96.

"Art de Buffet"







We recommend the use of non-slip silicone sleeves item 4683.

#### silicone sleeve

transparent, slotted alongside, for buffet etagere items 2193, 2193.02, 2119 and 2119.02 (prevents the slipping of glass platters)

item	length in mm	packing unit
4683	10	24 pcs.



#### buffet platter

special hardened safety glass, rounded edges, polished rim, dishwasher-safe, rubber feet included (adhesive), underside scratch-proof, 4 mm thick

item	version	l x w in cm
1668.08	black glass	80x20
1670.08	white glass	80x20



#### buffet platter

hardened glass, grey transparent, rectangular, irregularly coloured in a cloudy look, underside structured, dishwasher-safe, scratch-proof

item	l x w in cm	thickness in mm
8008.08	80x21	8



#### buffet platter

hardened glass, rectangular, edges polished and deburred, 10 mm thick

item	version	l x w in cm
5243	transparent glass	80x21
5243.M	satined glass	80x21
5243.B	dark grey glass	80x21







## buffet etagere

massive stainless steel 18/10, including three trays  
item 2193.01 (62 cm long, 18 cm wide, 5 cm high),  
hammered finish, six times polished

item	w x d x h in cm	packing unit
2193	62x42x32.5	four-parts



## buffet etagere

massive stainless steel 18/10, without trays item  
2193.01 (please order separately), hammered finish,  
six times polished

item	w x d x h in cm
2193.02	46x42x31



## tray with feet

massive stainless steel 18/10, rectangular,  
hammered finish, six times polished, for buffet  
etagere items 8013, 2193 and 2193.02

item	l x w x h in cm
2193.01	62x18x5



## bowl

massive stainless steel 18/10, oblong, hammered  
finish, six times polished

item	l x w x h in cm
2184	62x15x7



## buffet bowl "Lotus"

massive stainless steel 18/10, square, with horn-ball  
feet, hammered finish, six times polished

item	l x w x h in cm
2132	31x31x17



The triangle bowls are available on page 88.

We recommend to clean the horn-ball feet only with moist, soft tissues and non-abrasive substances. Cleaning in the dishwasher may damage the sealing.



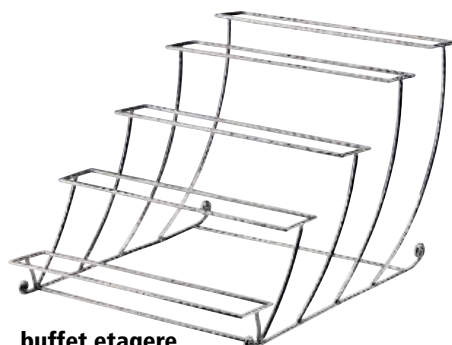




### buffet etagere

massive stainless steel 18/10, including five trays  
item 2119.01 (66 cm long, 8 cm wide, 3 cm high),  
hammered finish, six times polished

item	w x d x h in cm	packing unit
2119	66x54x32	six-parts



### buffet etagere

massive stainless steel 18/10, delivery without trays  
item 2119.01 (please order separately), hammered  
finish, six times polished

item	w x d x h in cm
2119.02	38x54x31



### tray with feet

massive stainless steel 18/10, rectangular, hamme-  
red finish, six times polished, for buffet etagere  
items 2119 and 2119.02

item	l x w x h in cm
2119.01	66x8x3



### buffet platter

special hardened safety glass, rectangular, rounded  
edges, polished rim, dishwasher-safe, rubber feet  
included (adhesive), underside scratch-proof,  
4 mm thick

item	version	l x w in cm
1668.12	black glass	66x10
1670.12	white glass	66x10



### silicone sleeve

transparent, slotted alongside, for buffet etagere  
items 2193, 2193.02, 2119 and 2119.02 (prevents  
the slipping of glass platters)

item	length in mm	packing unit
4683	10	24 pcs.

For the placement with glass platters we  
recommend the use of non-slip silicone  
sleeves (item 4683).







### etagere

massive stainless steel 18/10, including three removable trays item 2110.01 (30 cm long, 8 cm wide, 3 cm high), hammered finish, six times polished

item	l x w x h in cm
2110	11.5x11.5x39 (height without handle)



### tray with feet

massive stainless steel 18/10, rectangular, hammered finish, six times polished, for buffet etagere item 2110

item	l x w x h in cm
2110.01	30x8x3



### toast rack

massive stainless steel 18/10, for 4 slices of toast, hammered finish, six times polished

item	l x w x h in cm
2190	20x8.5x15



### pastry tray

massive stainless steel 18/10, rectangular, hammered finish, six times polished

item	l x w in cm
2136	30x12.5



### sushi tray "Longtray"

massive stainless steel 18/10, hammered finish, six times polished

item	l x w in cm
2160.66	66x8
2160.90	90x8

Elegantly served - stylishly presented!

Whether it is five o'clock tea, breakfast or finger food - etageres by Zieher offer a maximum use of minimum space.

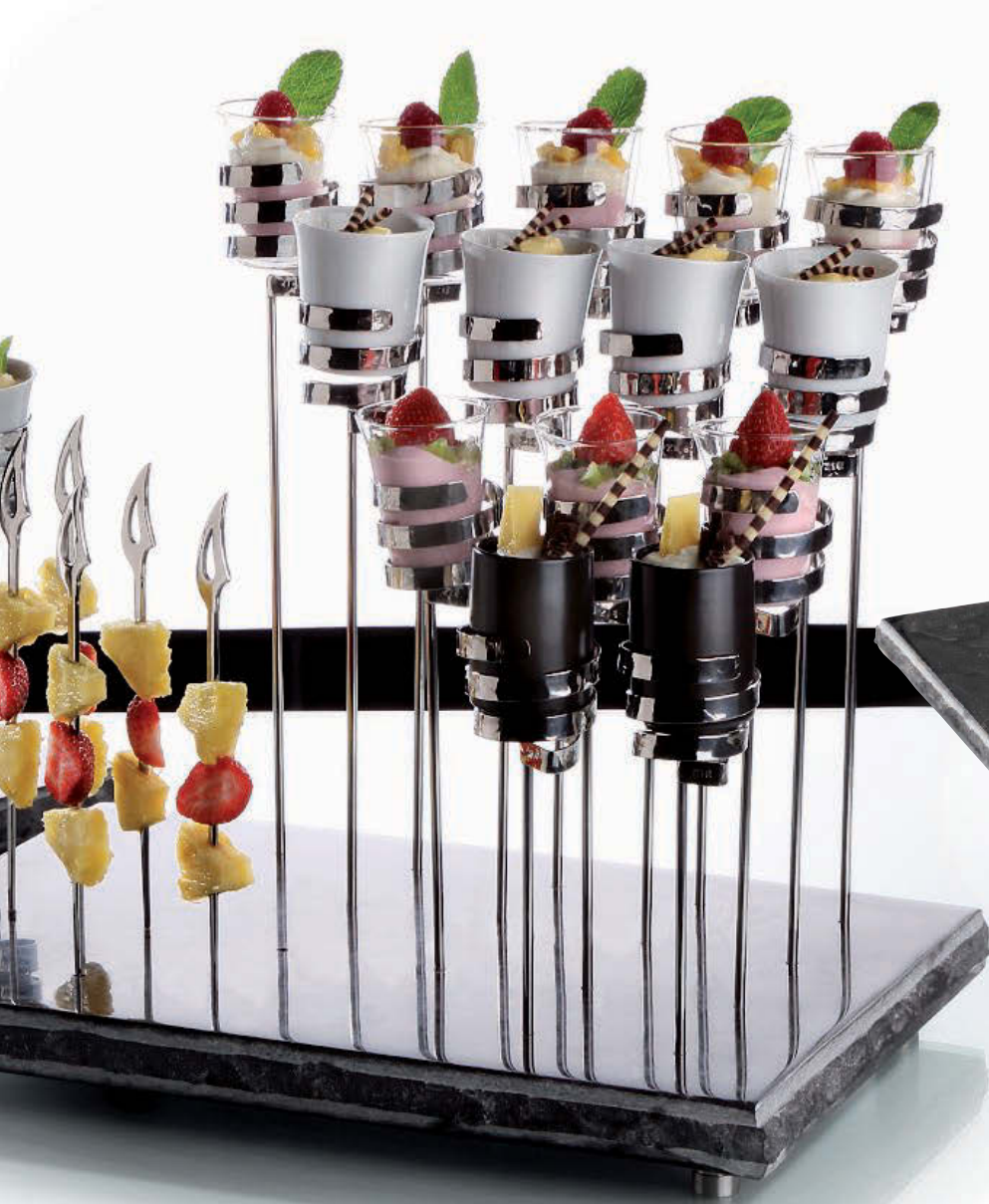
"Art de Buffet"

DESIGN  
by  
ZIEHER



More etageres for china and glass are available on page 265.





Marble is a natural product. Please note the details on page 234.



#### holder coil shape

massive stainless steel 18/10, hammered finish, six times polished, for inserts of china and glass

item	Ø in cm	total height in cm
2167.15	5.5	20
2167.20	5.5	25
2167.25	5.5	30
2167.30	5.5	35



#### marble platter

black/brown, polished surface, sides rough-textured, stainless steel feet, 24 bore holes (Ø 5 mm), for holder coil shape items 2167... or skewer items 1939.01/02 (please order separately)

item	l x w x h in cm
8052	45x31x5



#### marble platter

black/brown, rectangular, polished surface, sides rough-textured, 2.5 cm thick, feet of felt, not dishwasher-safe, for holder coil shape items 2167... or skewer items 1939.01/02 (please order separately)

item	version	l x w in cm
8022.01	2 holes	20x10
8022.02	3 holes	30x10



#### miniature

china, stackable, Ø 5.3 cm, 7 cm high, 0.1 L content

item	colour	packing unit
4490	white	6 pcs.
4490.01	black	6 pcs.



#### glass miniature

borosilicate glass, transparent, handblown, double-walled, with reinforced rim

item	Ø / height in cm	content in L	packing unit
4901.03	5.7 / 7.5	approx. 0.08	6 pcs.

#### glass miniature "Amuse"

borosilicate glass, transparent, handblown, oval, single-walled

item	Ø / height in cm	content in L	packing unit
4912	6 / 7.5	approx. 0.11	6 pcs.



#### skewer

stainless steel 18/10, 24 cm long

item	version	packing unit
1939.01	moon	12 pcs.
1939.02	flame	12 pcs.





### dressing jar

massive stainless steel 18/10, double-walled, polished inside, hammered finish outside, six times polished

item	Ø in cm	height in cm	content in L
2176	14	15.5	1.5



### spoon rest

massive stainless steel 18/10, rectangular, hammered finish, six times polished

item	l x w in cm
2154	18x10



### spoon rest

massive stainless steel 18/10, six times polished

item	l x w x h in cm
2172	6.5x9.5x3.5



### serving tongs

massive stainless steel 18/10, hammered finish, six times polished

item	length in cm
2111	25



### serving tongs

massive stainless steel 18/10, hammered finish, six times polished

item	length in cm
2139	28



### tongs holder

massive stainless steel 18/10, hammered finish, six times polished, for tongs up to 24 cm length

item	l x w x h in cm
2115	27.5x9.5x28



### chocolate/ice cube tongs

massive stainless steel 18/10, hammered finish, six times polished, 19 cm long

item	version
2138	stainless steel
2138.G	stainless steel, golden <b>NEW!</b>
2138.C	stainless steel, copper <b>NEW!</b>



### serving tongs

massive stainless steel 18/10, hammered finish, six times polished, 21.5 cm long

item	version
2140	stainless steel
2140.G	stainless steel, golden <b>NEW!</b>
2140.C	stainless steel, copper <b>NEW!</b>



The tongs have a thickness of 4 mm, they rest perfectly in your hand and convey a sense of quality.





### servers "Mao"

stainless steel 18/10, with black handles of resin, dishwasher-safe

item	version	length in cm
0493.21	salad set	28
0493.30	serving fork	27.5
0493.31	serving spoon	29
0493.40	soup ladle	30
0493.42	dressing ladle	29
0493.43	sauce ladle	22
0493.46	pie server	28



### dressing/jam jar

white china

item	Ø in cm	height in cm	content in L
4458	13.5	20	1.75



### card holder

optical glass, transparent

item	l x w x h in cm	slot width	packing unit
5208	6x4x4	approx. 2 mm	3 pcs.



### card holder

stainless steel, polished, with narrow slot, heavy quality

item	l x w x h in cm
3461	2.5x2.5x2.5



### sign "Choice"

white china, for self-labeling, to put on stainless steel holder item 4358 (please order separately)

item	l x h in cm	packing unit
4355.01	11.5x8.5	6 pcs.

### stainless steel holder

with supporting foot, for china sign "Choice" item 4355.01

item	Ø foot in cm	Ø / height in cm
4358	7	1.0 / 16

### table display

white china, for self-labeling

item	l x w in cm	packing unit
4076	8x4.5	6 pcs.



### card holder

massive stainless steel 18/10, polished, slot: 9 cm wide, 4 cm high

item	height in cm
2148	33

### servers "Goa"

stainless steel 18/10, with black handle of resin, dishwasher-safe

item	version	length in cm
0492.30	serving fork	27
0492.31	serving spoon	27



### ashtray for cigars

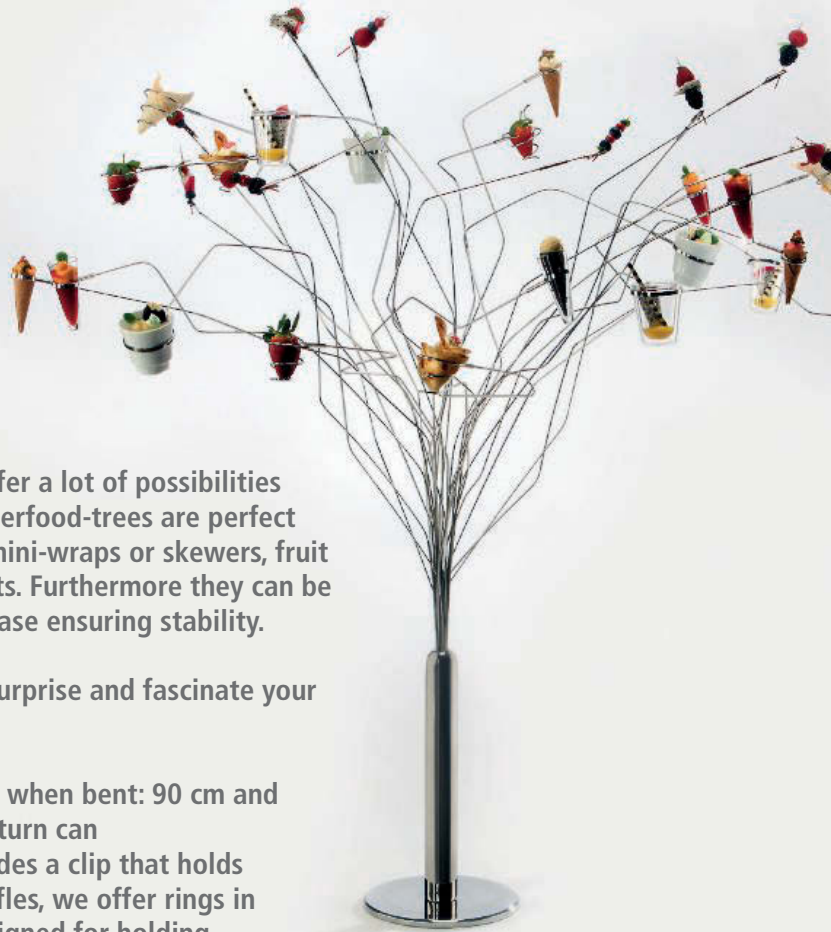
optical glass, transparent, delivery in black gift box, also usable as a rest for tongs or spoons

item	l x w x h in cm
5210	15x9x3



# "Fingerfood-Tree"

Wildly bent tree branches supported by a base made of polished stainless steel: The fingerfood-trees by Zieher are absolutely delightful due to their extraordinary look and variable uses achieved by the different attachments!



A number of suitable attachments and applications offer a lot of possibilities and form the basis for the chef's imagination. The fingerfood-trees are perfect for patisserie creations, savory snacks in the form of mini-wraps or skewers, fruit with chocolate icing or just for jam at breakfast buffets. Furthermore they can be placed on both buffets and bar tables with the solid base ensuring stability.

This extraordinary way of presenting fingerfood will surprise and fascinate your guests and will definitely leave a lasting impression.

The fingerfood-trees are available in two sizes (height when bent: 90 cm and 120 cm) and are furnished with 30 branches, which in turn can be fitted with 5 suitable attachments (page 102). Besides a clip that holds wooden skewers and a spiral for small wraps and waffles, we offer rings in three sizes, the medium size of which is especially designed for holding small jam jars (e.g. Bonne Maman).

Velcro straps to fasten the branches and a stout carrier bag are available from the accessory section and allow easy transport and space-saving storage of the bent trees.



Design: Jochen Gromann





Equipped with ring size M the fingerfood-tree is perfectly suitable for presenting portion jam, e. g. Bonne Maman.

DESIGN  
by  
ZIEHER



Design: Jochen Gromann



### spring clip support

stainless steel 18/10, polished, to screw onto the "branches" of the fingerfood-tree items 8018...

item	length in cm	packing unit
8019.01	7	10 pcs.

Ring size M is suitable for portion jam in conical glasses (e. g. Bonne Maman)



### ring support

stainless steel 18/10, polished, to screw onto the "branches" of the fingerfood-tree items 8018...

item	size	Ø (inside) in cm	packing unit
8019.02	S	2.8	10 pcs.
8019.03	M	3.8	10 pcs.
8019.04	L	5.6	10 pcs.



### spiral support

stainless steel 18/10, polished, to screw onto the "branches" of the fingerfood-tree items 8018...

item	Ø in cm	height in cm
8019.05	4.5 / 2.0	4.5



For ring size S

### glass cone

transparent, for cone stand items 2194...

item	Ø / height in cm	content in L	packing unit
5415	3.5 / 8	0.03	12 pcs.



For ring size L

### glass miniature

borosilicate glass, transparent, handblown, double-walled, with reinforced rim

item	Ø / height in cm	content in L	packing unit
4901.03	5.7 / 7.5	approx. 0.08	6 pcs.



For spiral support

### glass cloche

borosilicate glass, transparent, handblown, handmade

item	Ø in cm	approx. height in cm	packing unit
4982.05	5	8-9	6 pcs.



# "Fingerfood-Tree"

Please note:

The trees are being delivered with unbent branches; the bending has to be arranged before the first use!

The branches are made of stainless steel and will sag when loaded with food.

This is why the branches should not be bent too far down when empty. In order to obtain a more favourable result, we recommend bending the branches one by one and working in a circle from the outside to the inside.

The different attachments can be screwed onto the end of the branches, whereas the connection point should only be tightened up slightly. When using the rings or spiral, we recommend leaving the connection point open by about half a turn, because they will turn into the apt position by themselves due to the weight of the attachments.



## transport bag

polyester, black, with zip and 2 carrying straps, for fingerfood-tree items 8018...

item	l x w x h in cm
8018.T	150x29x29



## hook-and-loop strap

black, with chrome-plated clasp, for easy transport and space-saving storage of the fingerfood-tree items 8018...

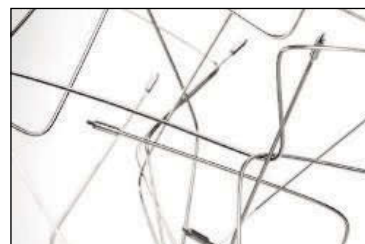
item	l x w in cm
5660	43x2.5



## fingerfood tree

stainless steel 18/10, polished, 20 short (87 cm) and 10 long (117 cm) "branches" of stainless steel wire, with 6 feet of felt, height after bending of "branches": approx. 110 - 130 cm, threaded ends for attachment of several supports items 8019... (please order separately)

item	Ø (foot) in cm	height unbent
8018.02	25	166 cm



## fingerfood tree

stainless steel 18/10, polished, 30 "branches" of equal length (87 cm) of stainless steel wire, with 6 feet of felt, height after bending of "branches": approx. 90 - 110 cm, threaded ends for attachment of several supports items 8019... (please order separately)

item	Ø (foot) in cm	height unbent
8018.01	20	121 cm