

"Modul" - melamine

The advantages of melamine are manifold. It is dishwasher-safe and food-safe, which becomes evident in daily catering use! The smallest tray is 530 mm long and is therefore partially compatible with existing GN-systems. All trays are stackable.

Besides the merely technical properties, the flat black trays differ from the variant made of wood by their modest design and comfortable haptic.



DESIGN
by
ZEHER

base tray "Modul"

melamine, black, surface matt, food-safe, dishwasher-safe, not suitable for microwave and combi steam oven

item	l x w x h in cm	packing unit
4581	53x28x1.8	2 pcs.
4582	72.5x28x1.8	2 pcs.
4583	95.5x28x1.8	2 pcs.



The grooves at the bottom side of the tray let water from the dishwasher run off



The bowl "Modul" is available on page 132.



The table spoon "Goa" is available on page 292.



bridge "Modul"

melamine, black, surface matt, 5 graded sockets (Ø top 5 cm, Ø bottom 2.5 cm), for several glass items (5257, 5405, 5413,...), with 4 rubber feet (black), food-safe, dishwasher-safe, not suitable for microwave and combi steam oven

item	l x w x h in cm	packing unit
4584	41.5x7.7x6	2 pcs.



The party spoon items 1938... are available on page 232.



spoon rest "Modul"

melamine, black, surface matt, with 4 rubber feet (black), food-safe, dishwasher-safe, not suitable for microwave and combi steam oven

item	l x w x h in cm	packing unit
4585	20x5x4	2 pcs.



Suitable inserts for the bridge are available on page 135.





“Modul” - melamine

- Modern design with matt-black surface
- Dishwasher-safe
- Food-safe
- Odourless
- Easy-care



"Modul" - walnut

Wood from the European walnut tree, which is one of the most precious and most beautiful types of wood, forms the basis for this series. Both the wood's warm brown colours in different shades and its intensive and distinctive grain make every product a unique item. The high-quality workmanship in combination with the food-safe sealing guarantees long durability, even in everyday use.



The party spoon items 1938... are available on page 232.



base tray "Modul"

walnut, food-safe sealed, stackable, not dishwasher-safe

item	l x w x h in cm
4721	47.5x25.5x3.1
4722	70x25.5x3.1
4723	92.5x25.5x3.1



The finger-groove on the bottom side of the tray guarantees safe and simple handling.



bridge "Modul"

walnut, food-safe sealed, not dishwasher-safe, with 5 graded sockets (Ø top 5 cm, Ø bottom 2.5 cm), with 4 rubber feet

item	l x w x h in cm
4724	42.5x9x6.5



spoon rest "Modul"

walnut, food-safe sealed, not dishwasher-safe, with 4 rubber feet

item	l x w x h in cm
4725	21x3.2x3.8



Suitable inserts for the bridge "Modul" are available on page 135.



buffet display "Solid"

walnut, food-safe sealed, not dishwasher-safe, bottom side open, can be used as a stand or as a container

item	l x w x h in cm	packing unit
4767.12	12x12x12	2 pcs.
4767.24	12x12x24	2 pcs.

“Modul” - walnut



- European walnut
- Warm shades of brown with vivid grain
- High-quality workmanship
- Finger-groove on the bottom side guarantees safe and simple handling



“Modul” - versions



walnut



small bowl “Modul”

white china, deep, lengthwise, for base trays “Modul” made of wood and melamine

item	l x w in cm	content in L	packing unit
4384	22x11	0.22	12 pcs.



non-slip mat (page 136)



walnut



small bowl “Modul”

white china, square, deep, for base trays “Modul” made of wood and melamine

item	l x w in cm	content in L	packing unit
4381	11x11	0.07	12 pcs.



non-slip mat (page 136)



walnut



small platter “Modul”

white china, square, flat, for base trays “Modul” made of wood and melamine

item	l x w in cm	packing unit
4380	11x11	12 pcs.



walnut



small platter “Modul”

white china, flat, transverse, for base trays “Modul” made of wood and melamine

item	l x w in cm	packing unit
4382	22x11	12 pcs.



walnut



platter “Modul”

white china, flat, item 4385.22 fits base trays “Modul” made of wood and melamine

item	l x w in cm	packing unit
4385.22	22x22	6 pcs.
4385.27	27x27	4 pcs.



small platter "Modul"

white china, flat, lengthwise, for base trays "Modul" made of wood and melamine

item	l x w in cm	packing unit
4383	22x11	12 pcs.



glass platter "Modul"

deep black, flat, lengthwise, for base trays "Modul" made of wood and melamine

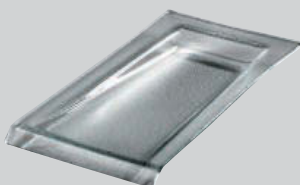
item	l x w in cm	packing unit
5074.03	22.5x11	6 pcs.



glass platter "Modul"

frosted look, flat, lengthwise, for base trays "Modul" made of wood and melamine

item	l x w in cm	packing unit
5074.02	22.5x11	6 pcs.



glass platter "Modul"

transparent, flat, lengthwise, for base trays "Modul" made of wood and melamine

item	l x w in cm	packing unit
5074.01	22.5x11	6 pcs.



The amuse gueule/tapas spoon item 4260.01 is available on page 232.



tapas spoon "Modul"

white china

item	l x w x h in cm	packing unit
4260.03	10x4x2.2	12 pcs.



melamine



melamine



melamine



melamine with non-slip mat (page 136)

"Modul"



walnut



melamine with non-slip mat (page 136)



melamine



melamine



melamine



skewer

stainless steel 18/10, 24 cm long

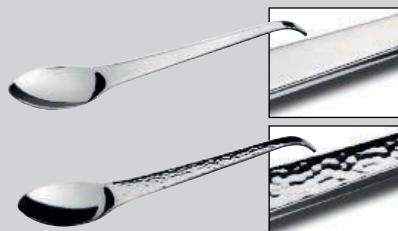
item	version	packing unit
1939.01	moon	12 pcs.
1939.02	flame	12 pcs.



party spoon “ECO”

stainless steel 18/10, matt brushed, 1.8 mm thick

item	length in cm
1938.02	21



party spoon

stainless steel 18/10, heavy quality, 4.3 mm thick, 21 cm long

item	version
1938	polished
1938.01	hammered finish



table spoon “Goa”

stainless steel 18/10, handle of resin, dishwasher-safe

item	length in cm	packing unit
0492.01	21	12 pcs.



spoon rest “Modul”

melamine, black, surface matt, with 4 rubber feet (black), food-safe, dishwasher-safe, not suitable for microwave and combi steam oven

item	l x w x h in cm	packing unit
4585	20x5x4	2 pcs.



cutlery/napkin box

melamine, black, surface matt, with 4 rubber feet, food-safe, dishwasher-safe, not suitable for microwave and combi steam oven, for cocktail napkins folded to 1/8

item	l x w x h in cm	content in L	packing unit
4591	16x6x4.5	0.26	2 pcs.



glass dish

borosilicate glass, flat

item	Ø / height in cm	content in L	packing unit
4910	10.5 / 2.5	0.18	12 pcs.



glass

transparent, for bridges "Modul" items 4584 and 4724

item	Ø / height in cm	content in L	packing unit
5405	5 / 8.6	0.1	6 pcs.



glass

transparent, reinforced foot (ring Ø 4.6 cm), for bridges "Modul" items 4584 and 4724

item	height in cm	content in L	packing unit
5413	9.5	0.07	12 pcs.



dessert glass

transparent, for bridges "Modul" items 4584 and 4724

item	Ø / height in cm	content in L	packing unit
5257	7 / 10	0.08	12 pcs.



glass miniature

transparent, wavy rim, base: 0,07 L content, top part: 0,04 L content, for bridge "Modul" items 4724 and 4584

item	version	Ø / height in cm	packing unit
5423.01	base	6.5 / 5.5	12 pcs.
5423.02	top	6.3 / 4.5	12 pcs.



test tube

borosilicate glass (temperature change resistant), with flanged rim and round bottom, suitable for holder for test tube items 4680... and 5207... and cork item 1501

item	content in L	packing unit
4032.G	0.04	24 pcs.



cork

for test tube item 4032.G

item	Ø in cm	length in cm	packing unit
1501	2.0/1.7	2.6	24 pcs.



holder for test tubes

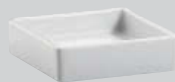
silicone, with grooves on the inside for easy insertion of glass tubes, for test tube item 4032.G, Ø 4.6 cm, 2.7 cm high

item	colour	packing unit
4680.S	black	6 pcs.
4680.W	white	6 pcs.



walnut with non-slip mat (page 136)

The "Modul" base trays made of walnut and melamine combine well with many Zieher items from the same series and beyond. Here are some suggestions:



mini bowl

white china, square

item	l x w x h in cm	content in L	packing unit
3853	7x7x2	0.05	12 pcs.



dip bowl "Twist" for olive oil

white china

item	l x w x h in cm	packing unit
3912	12x12x1.8	6 pcs.



mini bowl

square, 4.9 cm long, 4.9 cm wide, 4.5 cm high, 0.05 L content

item	version	packing unit
3845	china	4 pcs.
5254	glass	4 pcs.



walnut



mini platter

white china

item	l x w in cm	packing unit
4072.M	13x6	12 pcs.

Non-slip covers in matt black

Classy look - great benefit!



In connection with the trays made of walnut, the matt black look and the velvety texture, these mats create an interesting contrast. In combination with the "Modul" melamine trays, they become almost invisible.

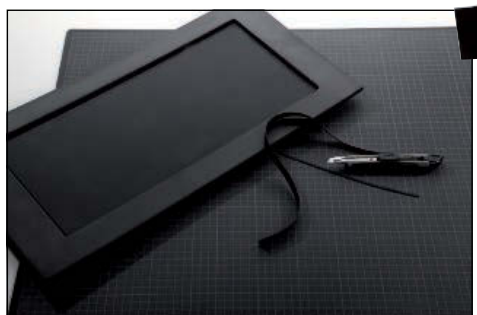
The mats made of food-safe silicone are extremely skid-proof and facilitate the serving considerably. No clattering, no shifting of porcelain bothers guests and staff!

To clean the mats, please use a moist cloth with some detergent and wipe off with a cloth and clear water.

Non-slip coasters for single miniatures are available on page 206.



The sizes of the mats perfectly fit the walnut trays items 4721, 4722 and 4723. With a sharp cutter knife the mats can be adjusted in size to fit the same sized melamine trays items 4581, 4582 and 4583. We recommend the use of a cutting board and a steel ruler.



non-slip mat

silicone, black, temperature resistant (-40 °C - +230 °C), food-safe, for walnut trays "Modul" items 4721, 4722 and 4723, can be cut to fit melamine trays "Modul" items 4581, 4582 and 4583

item	l x w in cm	packing unit
4660.01	42.6x20.6	6 pcs.
4660.02	65.5x20.6	6 pcs.
4660.03	87.6x20.6	6 pcs.